



9 Tirlemont Road
South Croydon, CR2 6DS

£1,850 Per Month



9 Tirlemont Road

South Croydon, CR2 6DS

Nestled on the tranquil Tirlemont Road in South Croydon, this charming three-bedroom flat conversion presents an excellent opportunity for those seeking a comfortable and spacious home. Recently refurbished, the property boasts new carpets and a fresh coat of paint throughout, ensuring a clean and inviting atmosphere.

As you enter through your own front door, you are welcomed by a communal entrance hallway that leads to a private staircase, taking you to the first floor. The spacious landing provides a versatile work space, perfect for those who may need a quiet area to focus. The lounge, which is generously sized, seamlessly opens into the kitchen, creating a wonderful space for both relaxation and entertaining.

The flat features three well-proportioned bedrooms, offering ample space for family or guests. Additionally, there is a separate bathroom and WC, enhancing the practicality of the layout. Outside, you will find an off-road parking space, providing convenience in this desirable location.

Situated at the end of a peaceful cul-de-sac and bordering a lovely park, this home enjoys a serene setting while still being close to the vibrant amenities of South Croydon. The area benefits from excellent public transport links, making it easy to explore the wider region.

This delightful flat is ready for immediate viewing, with keys held at the agency. Do not miss the chance to make this lovely property your new home.

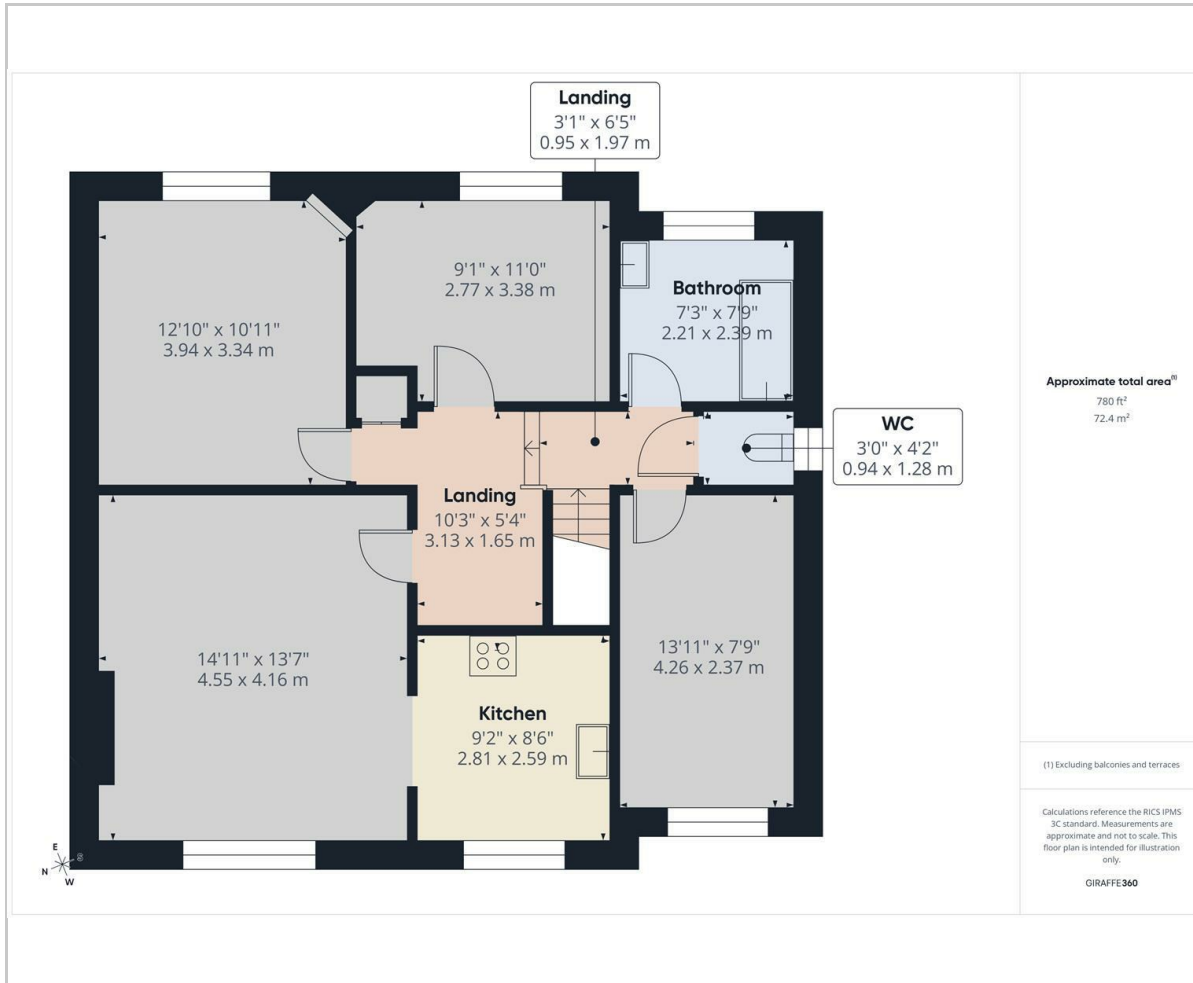




- Communal Entrance hallway
- Entrance and staircase to 1st floor
- Large landing area/office space
- Lounge
- Kitchen
- Bedroom
- Bedroom
- Bedroom
- Bathroom
- WC
- Parking space



Floor Plan



Area Map



Viewing

Please contact our Coulsdon Sales Office on 0208 763 8878 if you wish to arrange a viewing appointment for this property or require further information.



147 Brighton Road,
Coulsdon,
Surrey
CR5 2NJ

Tel: 020 8763 8878

Email: sales@danieladamsestateagents.co.uk

www.danieladamsestateagents.co.uk

Energy Efficiency Graph

